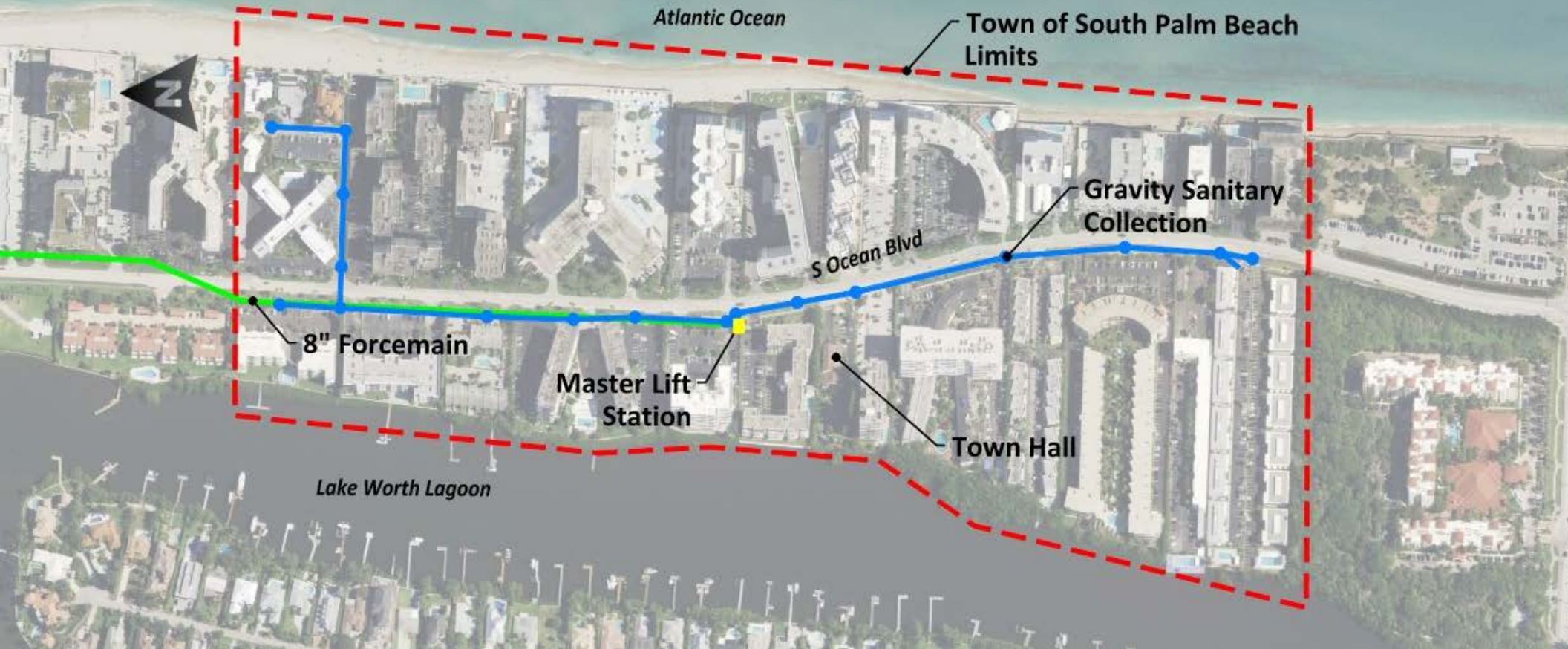




Town of South Palm Beach Master Lift Station Rehabilitation

MOCK • ROOS
CONSULTING ENGINEERS



Senior Project Manager

JOHN CAIRNES, PE

**Experienced Leader +
Strong Communicator**



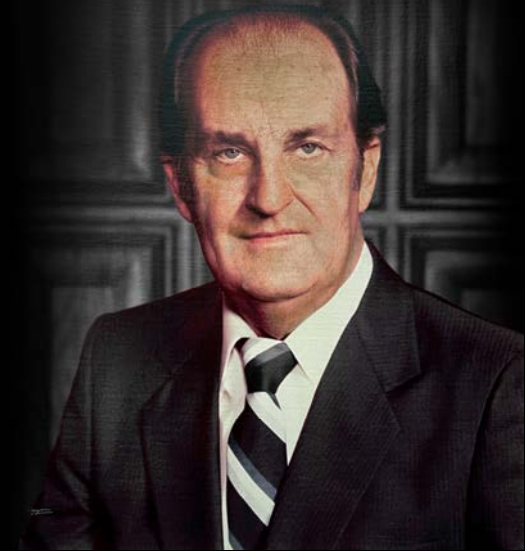
- Entire 18 Year Career with Mock•Roos
- Condition Assessments
 - 1,000+ Lift Stations
- Inspection and Evaluation
 - 1,150+ Lift Stations
- 150+ Lift Station Rehab Designs on:
 - Local Stations
 - Master Stations
 - Regional Stations

Celebrating
72 YEARS
1954-2026

MOCK • ROOS
CONSULTING ENGINEERS



- Extensive Local Expertise
- Value Customer Service
- Quickly Respond to Needs
- Produce Quality Products
- Competitive Prices



KENNETH MOCK, PE, PSM

Professional Surveyor and Mapper
Professional Engineer

EDWARD ROOS, PSM

Professional Surveyor and Mapper

Senior Vice President

GARRY GRUBER, PE

Commit Inhouse Resources + Manage Schedules



- 26 Years with Mock•Roos
- Hands on Corporate Officer and is Mock•Roos' Production Manager
- \$450 Million of Infrastructure in Palm Beach County
- 50+ Stormwater Pump Stations
- 40+ Wastewater Lift Stations

MOCK•ROOS TEAM



JOHN CAIRNES, PE
Senior Project Manager

19 years
Mock•Roos

19 years
Total



JUSTIN BARNEY, PE
Senior Project Engineer

6 years
Mock•Roos

6 years
Total



TOM BIGGS, PE
Executive Vice President

48 years
Mock•Roos

34 years
Total



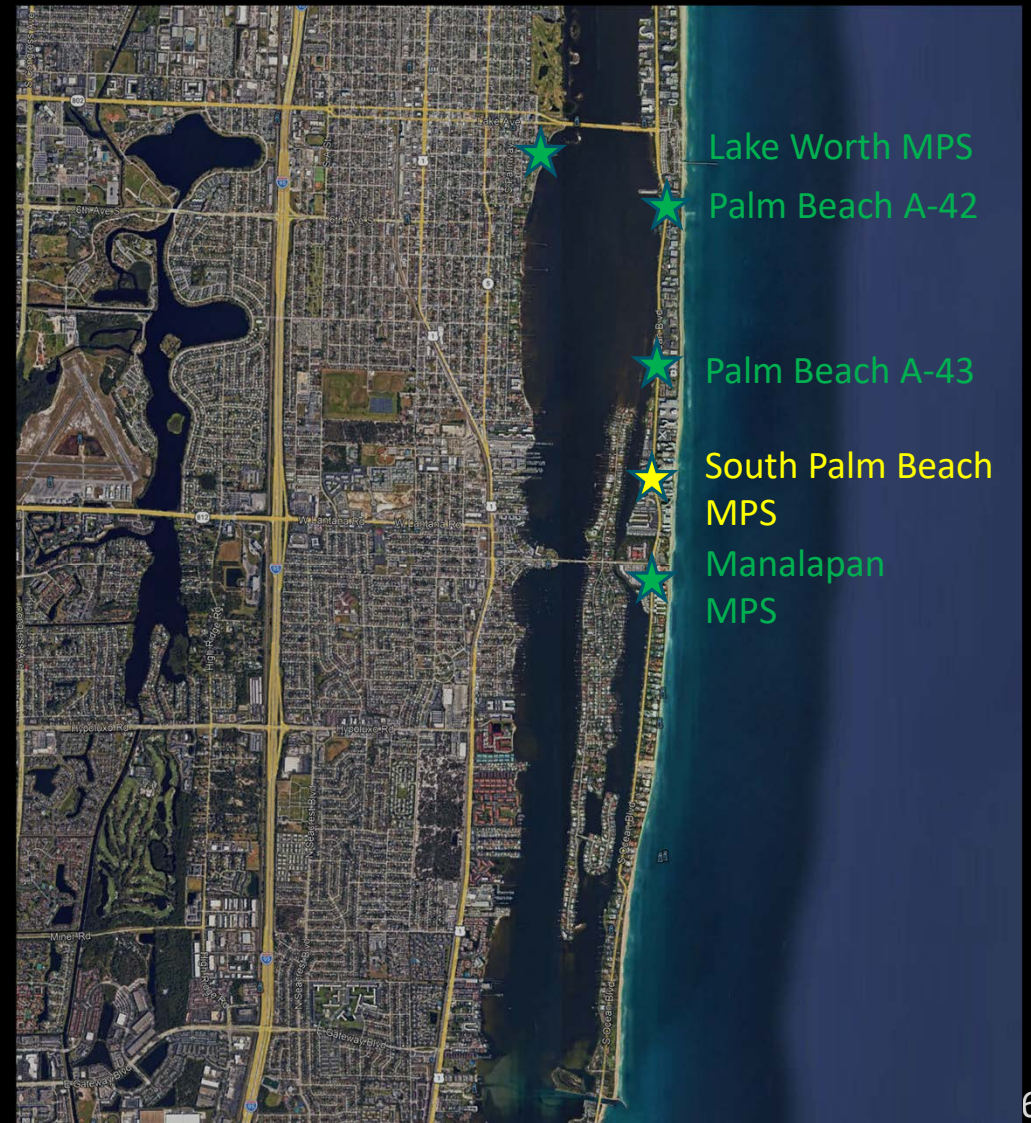
SPENCER SCHROEDER, PE
Senior Project Engineer

23 years
Mock•Roos

23 years
Total

OFFER THE RIGHT LOCAL TEAM!

- 15 Miles Away
- Committed to providing Full Accessibility of Staff
- Work Extensively Together
- Great Chemistry / Personal and Interactive Relationships



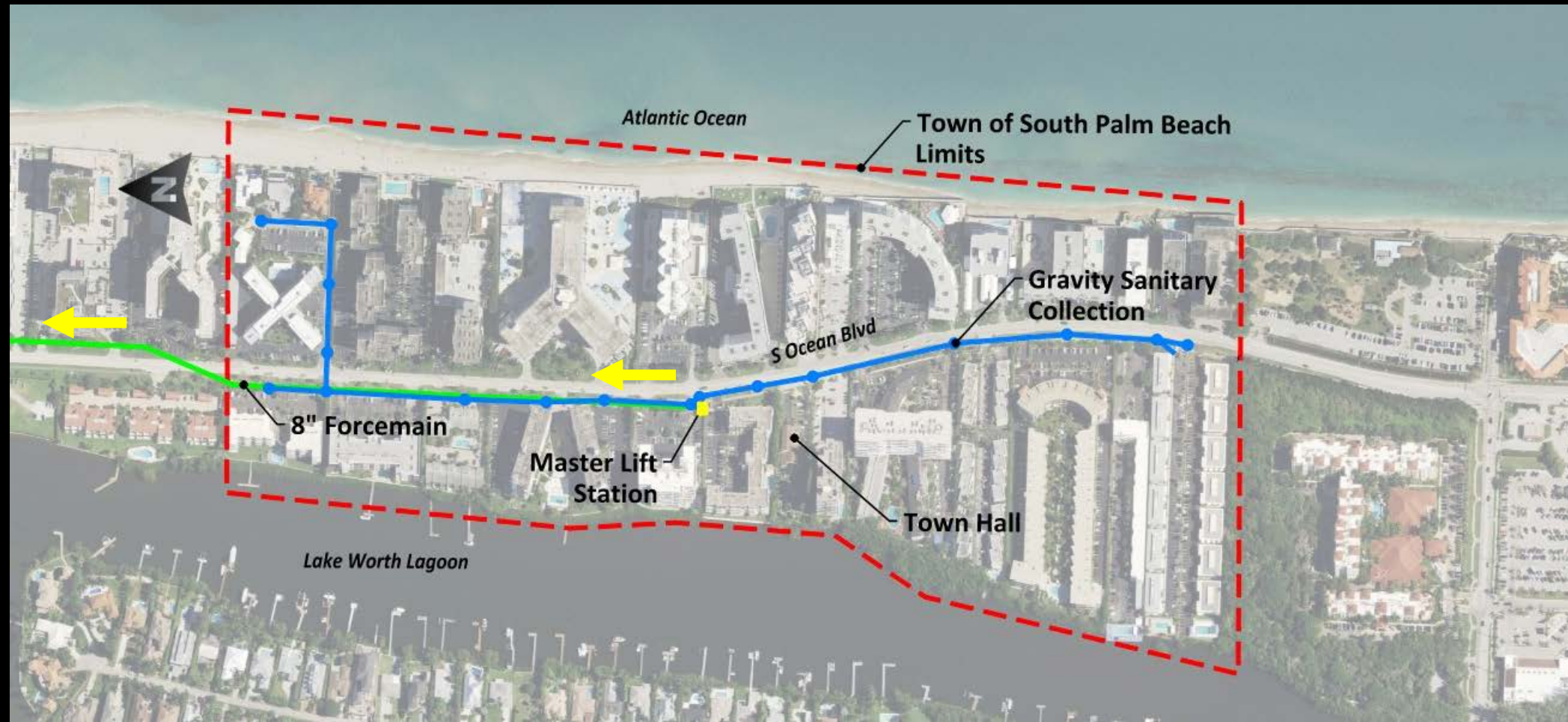
YOUR SYSTEM



YOUR SYSTEM



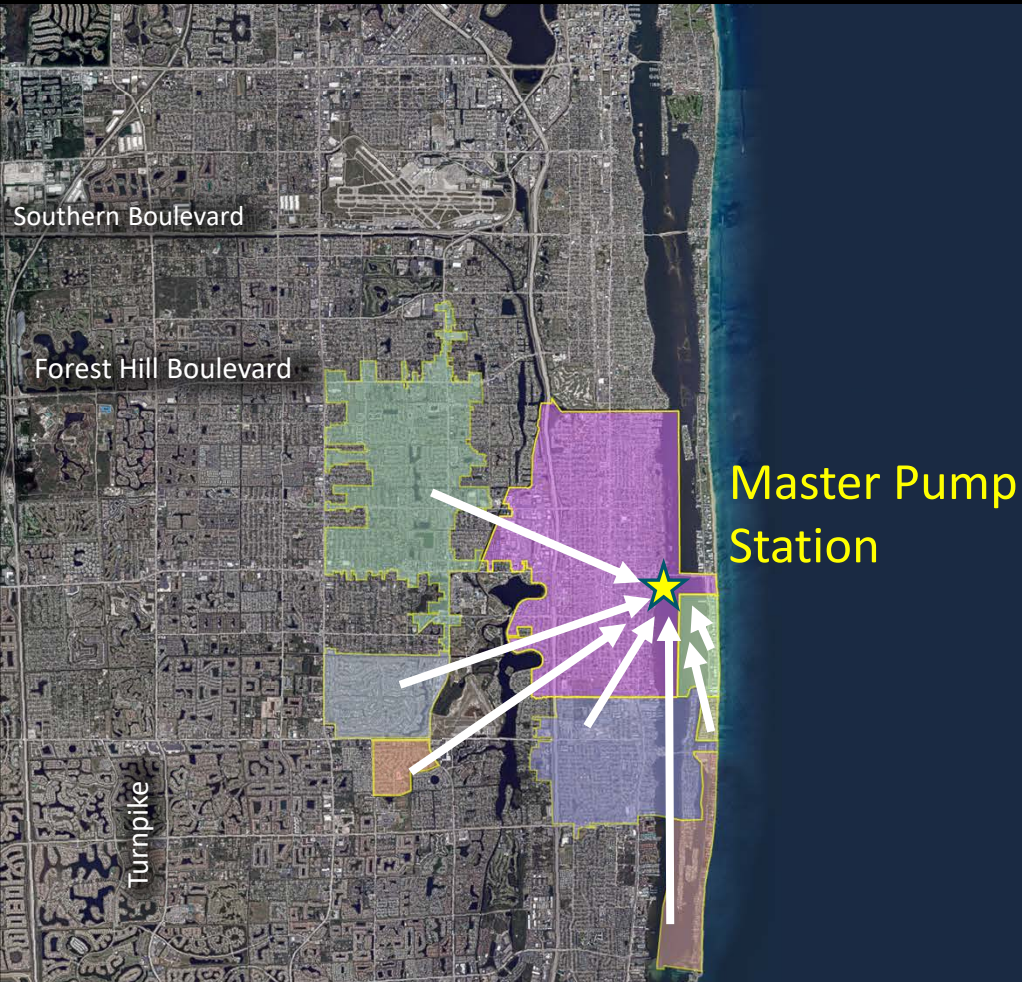
SUBREGIONAL SYSTEM



SUBREGIONAL SYSTEM

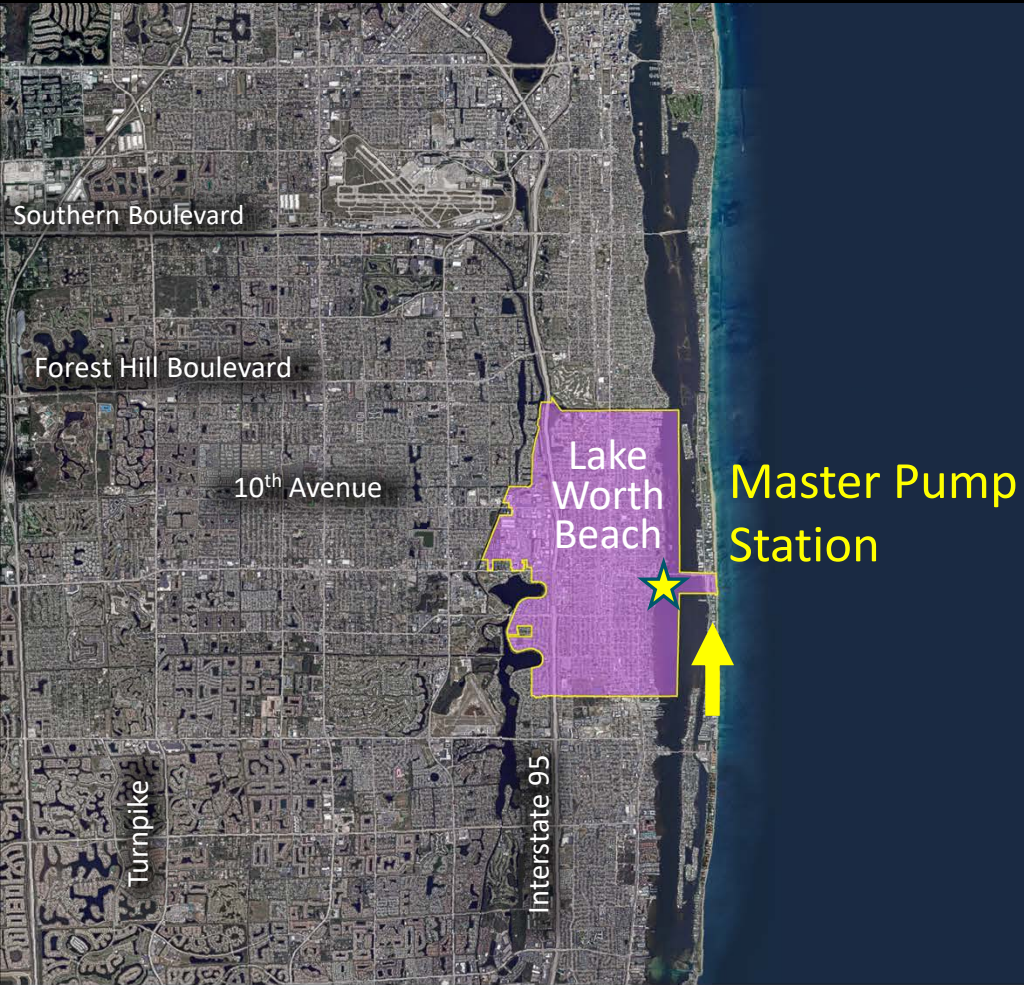


OTHER CONTRIBUTING MUNICIPALITIES

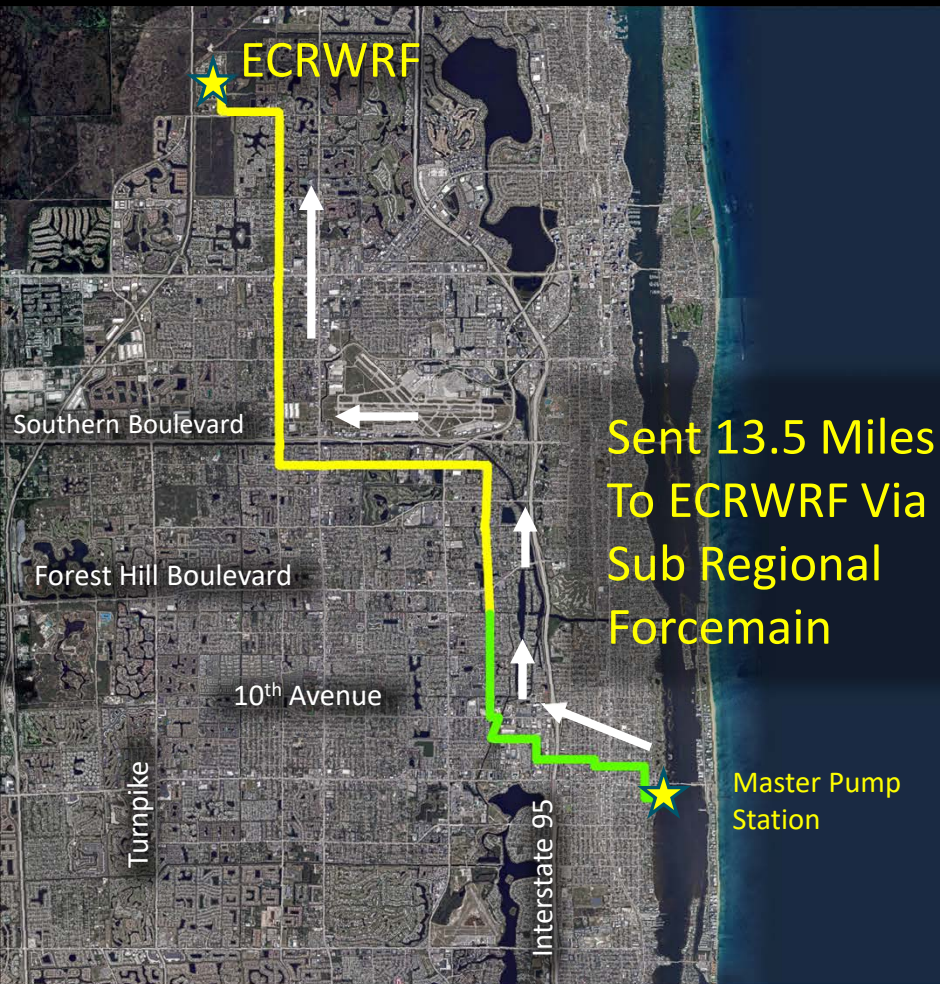


- Lake Worth Beach
- South Palm Beach
- Lake Clarke Shores
- Palm Springs
- Atlantis
- Lantana
- Manalapan
- Palm Beach State College
- Town of Palm Beach
- Seminole Manor

LAKE WORTH BEACH MASTER PUMP STATION

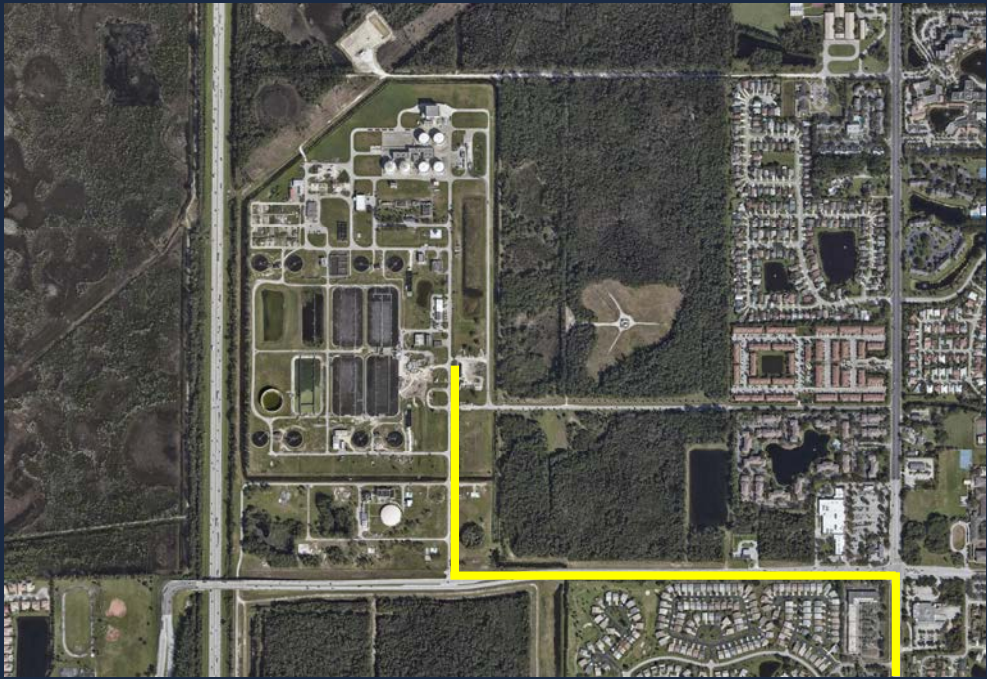
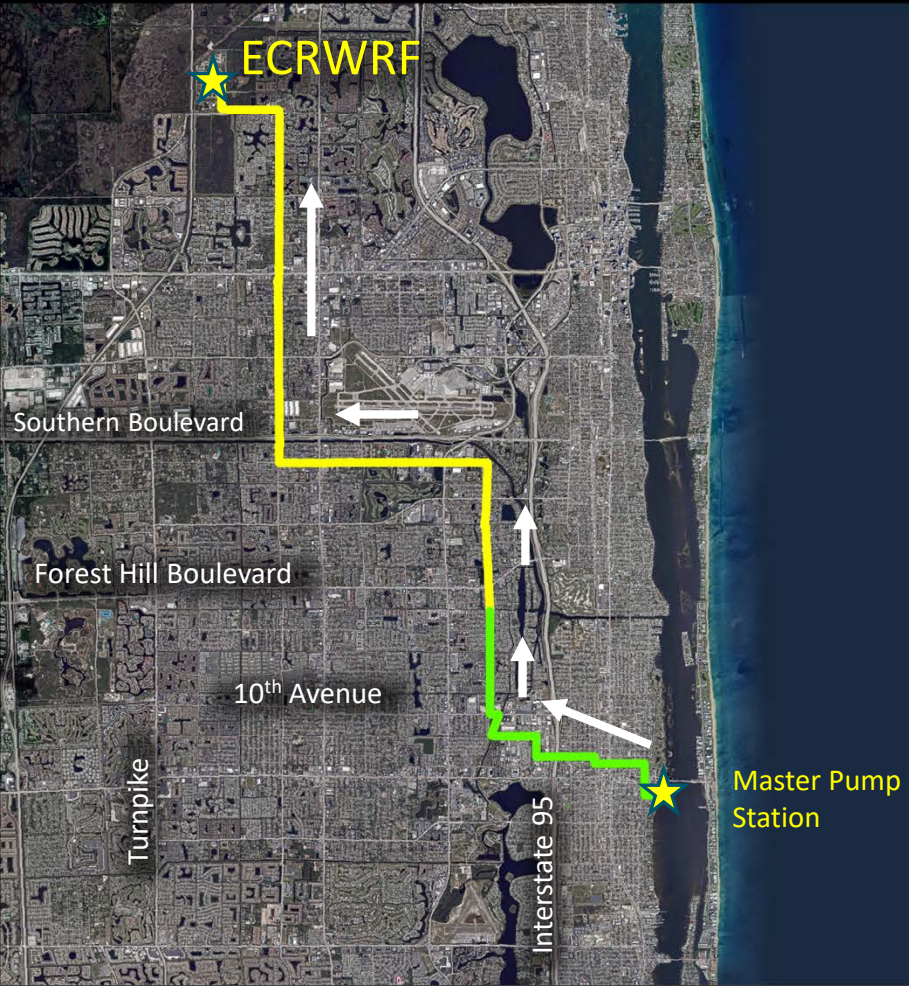


WASTEWATER DISPOSAL (AFTER 1979) ECRWRF

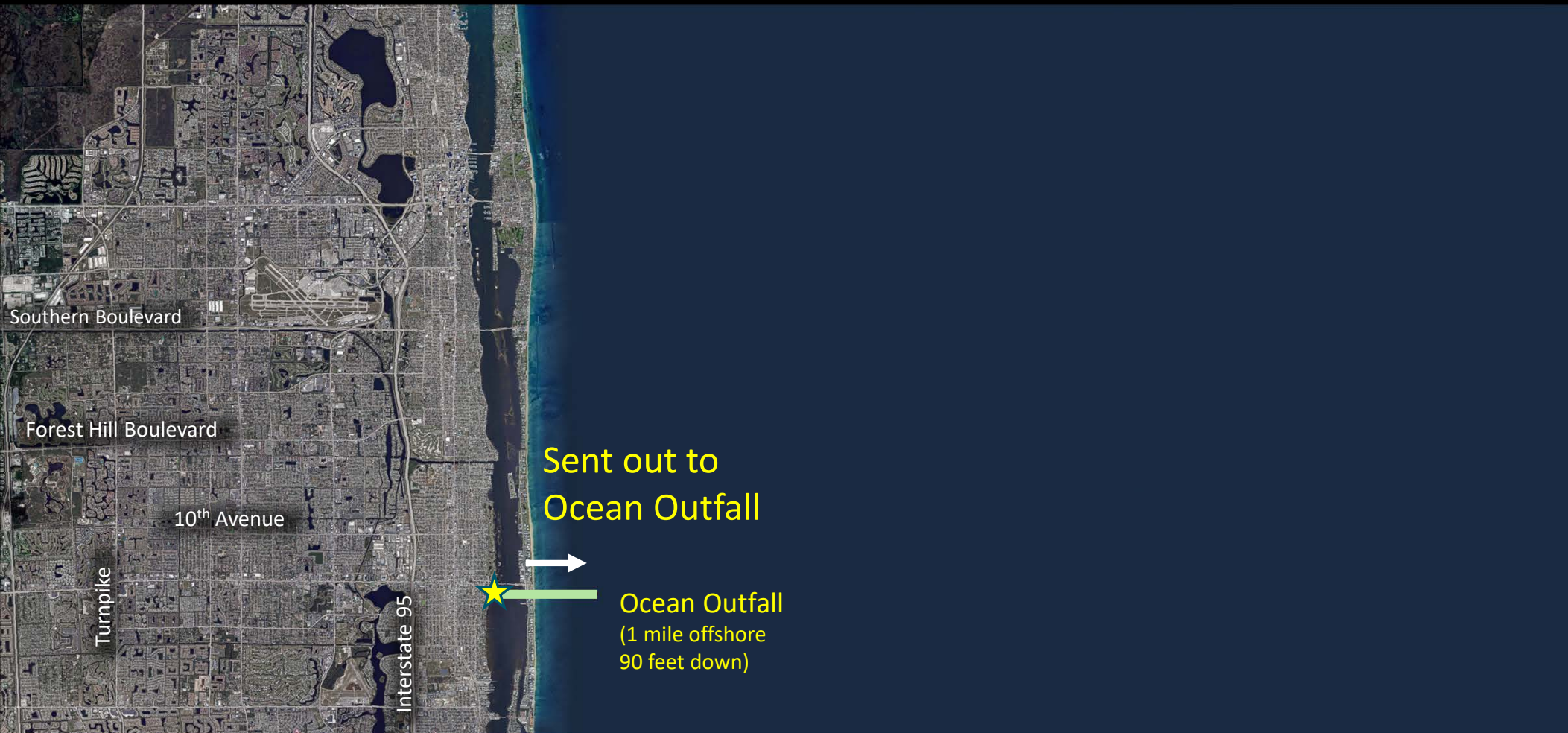


- Placed into service 1979
- 13.5 miles
- 36" PCCP and DIP (PBCWUD)
- 20 MGD

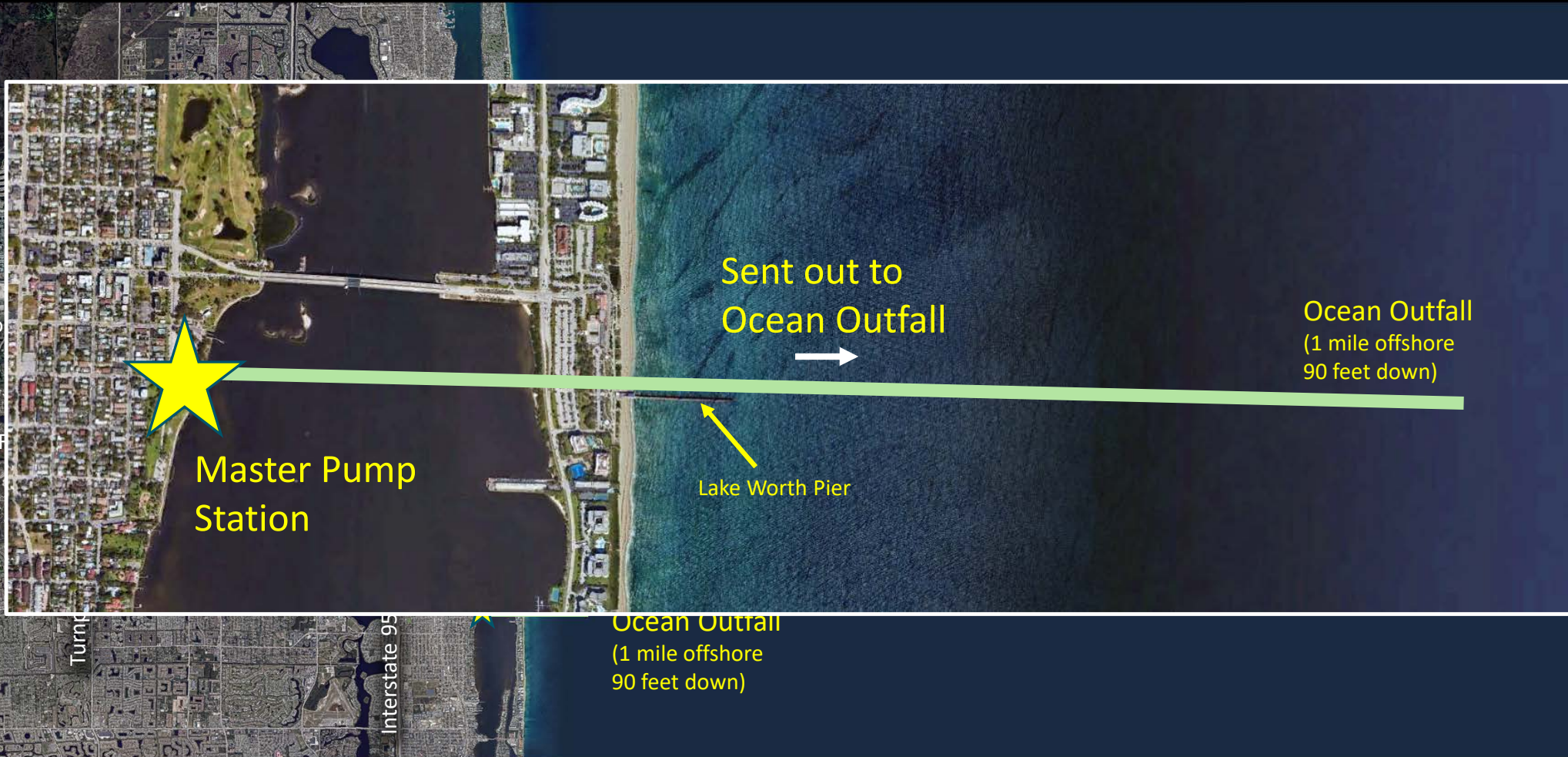
EAST CENTRAL REGIONAL WASTEWATER RECLAMATION FACILITY (ECRWRF)



WASTEWATER DISPOSAL (PRIOR TO 1979) INTRACOASTAL AND OCEAN OUTFALL



WASTEWATER DISPOSAL (PRIOR TO 1979) INTRACOASTAL AND OCEAN OUTFALL



PROJECT OVERVIEW

- Master Lift Station serves entire Town
- Single point of wastewater conveyance
- Originally constructed in 1965
- Last major upgrade in 2006
- Phase One: Condition Assessment DRAFT complete
 - October 2025



PROJECT GOALS

- Evaluate existing conditions
- Identify risks and deficiencies
- Compare improvement options
- Improve long-term reliability
- Meet current codes and standards



Town of South Palm Beach Master Lift Station Condition Assessment

October 2025

DRAFT

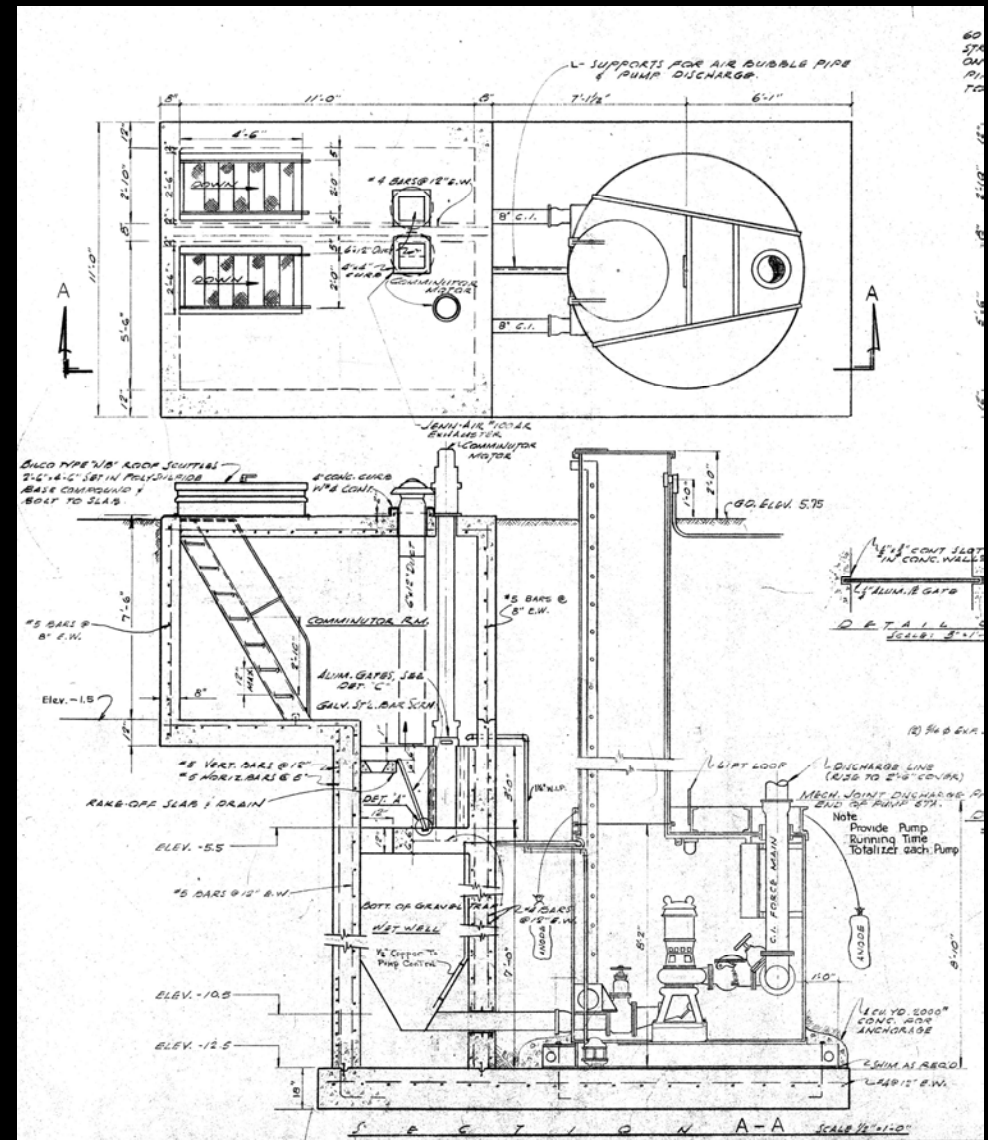
Prepared By:

MOCK ROOS

CONSULTING ENGINEERS

END OF RELIABLE LIFE

- Nearly 60 years old
- Major components beyond expected service life
- System still operational, but aging
- Increasing maintenance demands
- Reduced performance observed
- Growing risk of failure



KEY FINDINGS BY DISCIPLINE

- Civil: Limited access, flooding in vault
- Mechanical: Reduced pump performance
- Electrical: Outdated equipment, no backup power
- Structural: Significant deterioration
- No major components suitable for reuse



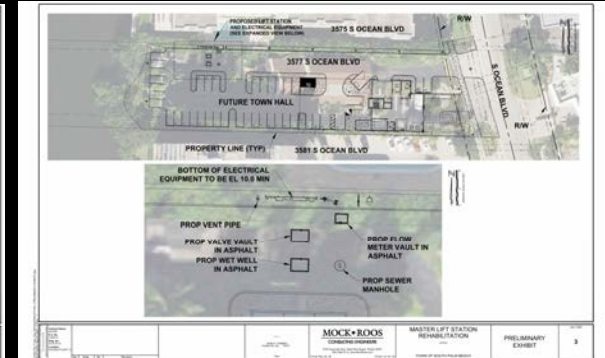
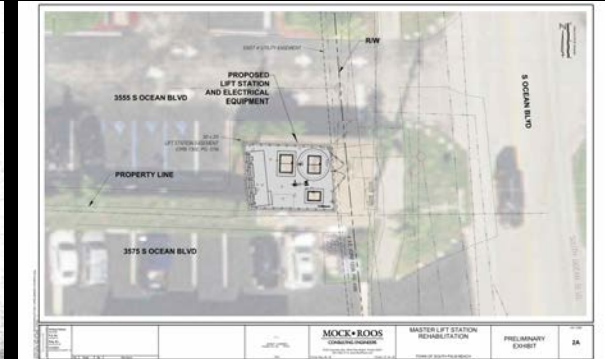
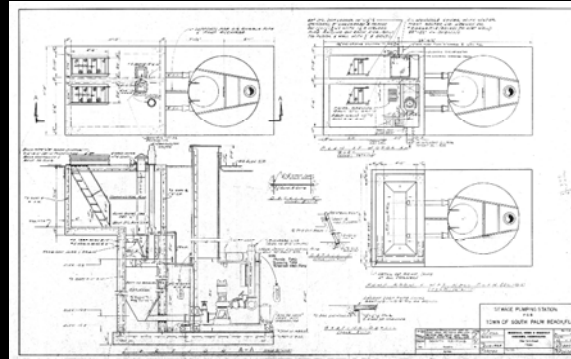
RESILIENCE & COMPLIANCE

- Located in FEMA flood zone (BFE 9.0)
- New standards require higher elevations
- Coastal corrosion environment
- Updated electrical and codes
- Must meet modern design criteria



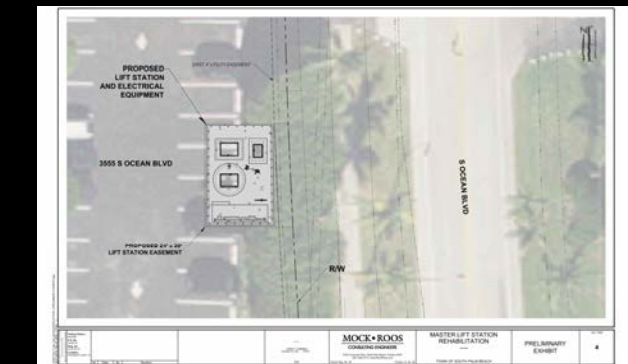
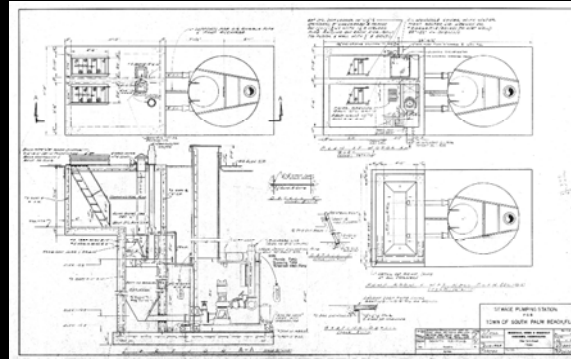
OPTIONS EVALUATED

- Option 1: Rehab existing station
- Option 2A: Replace (no building)
- Option 2B: Replace (with building)
- Option 3: Relocate to Town Hall
- Option 4: Relocate nearby (Concordia West)



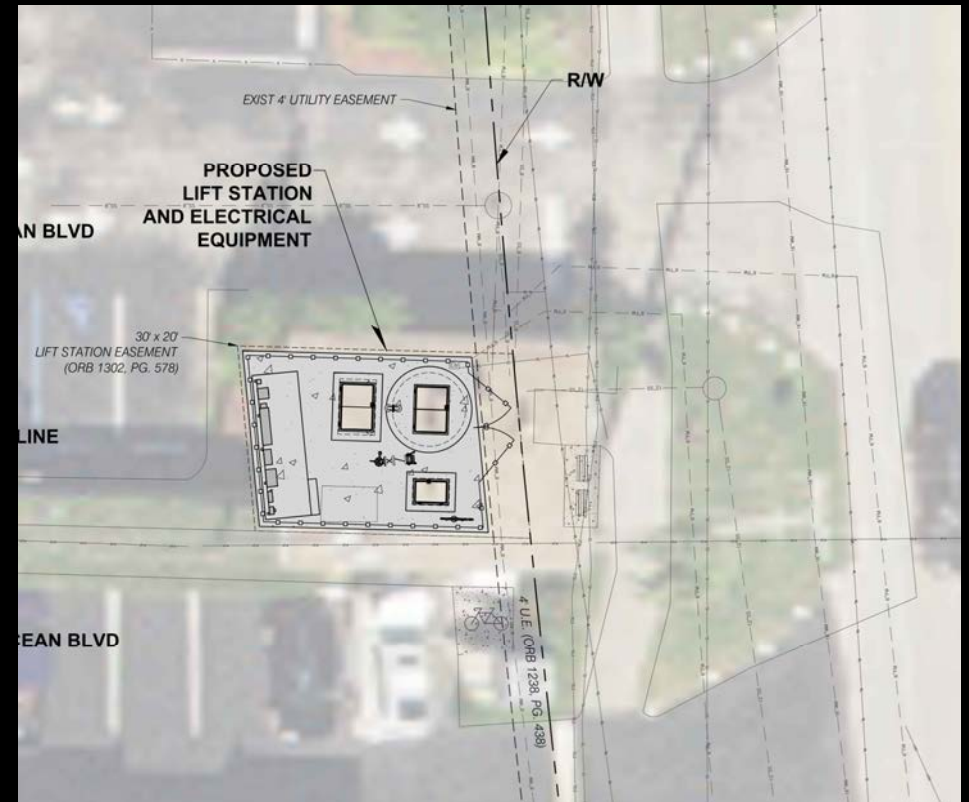
OPTIONS EVALUATED

- Option 1: Rehab existing station
- Option 2A: Replace (no building)
- Option 2B: Replace (with building)
- Option 3: Relocate to Town Hall
- Option 4: Relocate nearby (Concordia West)



PREFERRED OPTION: OPTION 2A

- Move forward with Option 2A
- Replacement station within existing footprint
- New wet well and valve vault
- No new building proposed
- Most viable option under current conditions
- Compatible with existing easements
- Town Hall project suspended



NEXT STEPS

- Approve moving forward with Option 2A
- Finalize Phase One report
- Provide next work order for design phase services
- Design/permitting/bidding duration: ~6-8 months
- Material Delivery: ~12 months
- Onsite Construction: ~6 months
- Full project duration: ~22 months



Questions

Celebrating
72 YEARS
1954-2026

MOCK • ROOS
CONSULTING ENGINEERS

A hand is shown placing a puzzle piece into a larger puzzle. The puzzle piece being placed has the Mock Roos logo on it. The background is dark with a grid of puzzle pieces, some of which are illuminated from behind, creating a glowing effect.

MOCK • ROOS
CONSULTING ENGINEERS